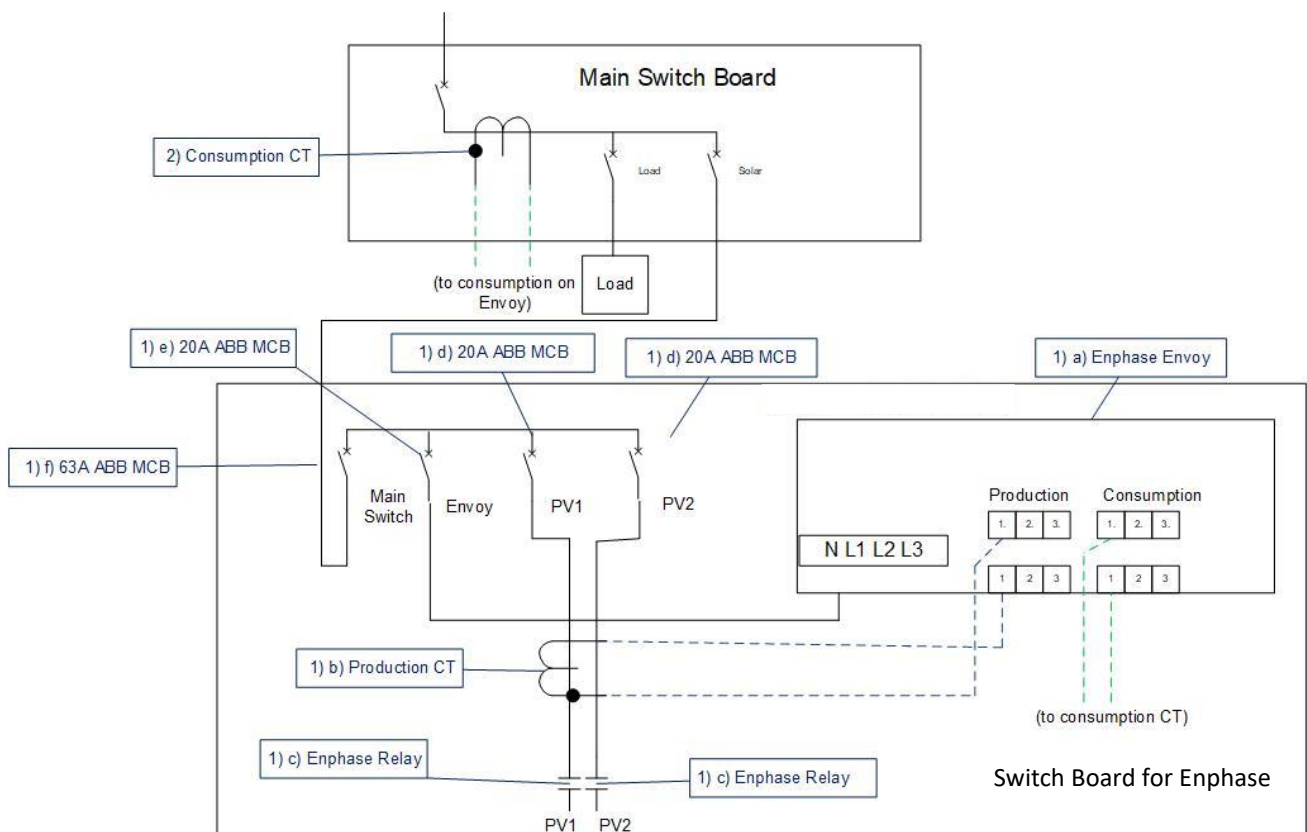


# Switch Board for Enphase- Single Phase

What's included:

- 1) 1 Switch Board for Enphase 1P
  - a) 1 x Enphase Envoy-S Metered + DRM (ENP-ENV-S-WM-230 M)
  - b) 1 x Enphase 100A CT (Production CT) (ENP-CT-100-SPLIT)
  - c) 2 x Enphase Relay Controller (ENP-Q-RELAY-1P-INT)
  - d) 2 x 20A MCB for Enphase Relay Controller (E-ACCB-ABB1P20)
  - e) 1 x 20A MCB for Enphase Envoy-S Metered (E-ACCB-ABB1P20)
  - f) 1 x 63A MCB for Main Switch (E-ACCB-ABB1P63)
  - g) 1 x Enphase AC label kits.
- 2) 1 x Enphase 100A CT (Consumption CT)
- 3) Labels for the main switch board.
- 4) Documents include the guide of the Enphase Envoy and Enphase Relay.

Single Line Diagram



- All components from Class 1) has been preinstalled and prewired in the Enphase Switch Board.
- Connect the power cable from the Microinverter to the Enphase Relay [1)c) Enphase Relay], and the Earth cable can connect to the earth busbar in the Switch Board.
- Connect the positive power cable from the Main Switch Board to the Main Switch [1)f) 63A ABB MCB], and wire the negative power cable to the negative busbar in the Switch Board.
- Consumption CT [2) Consumption CT] wiring, please make sure the arrow on the CT is towards to the Load.