

eArc

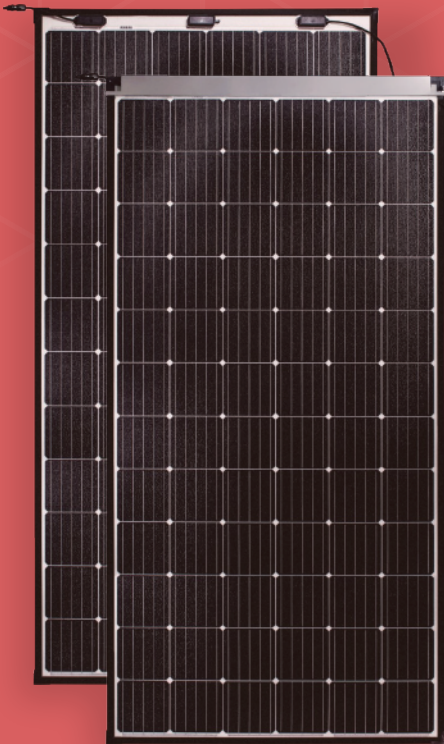
SMD355M-6X12UW

355 Watt

72 Cell Monocrystalline Module

POWER OUTPUT RANGE 355 W

POWER TOLERANCE 0-5 W



Ultra-light: Glass free solar module weighs 3.3 kg per m². 70% less than conventional glass modules.



Fast-Installation: Through “quick-bonding” installation, eArc reduces time on roof by 40% and eliminates the need of conventional mounting hardware.



Aesthetic: Seamless integration with underlying roofing surface.



Durable: eArc is the first glassless module to pass the same durability tests (IEC61215:2016) as conventional glass modules.

MADE IN CHINA

LINEAR PERFORMANCE WARRANTY

10 Year Product Warranty

25 Year Linear Power Warranty



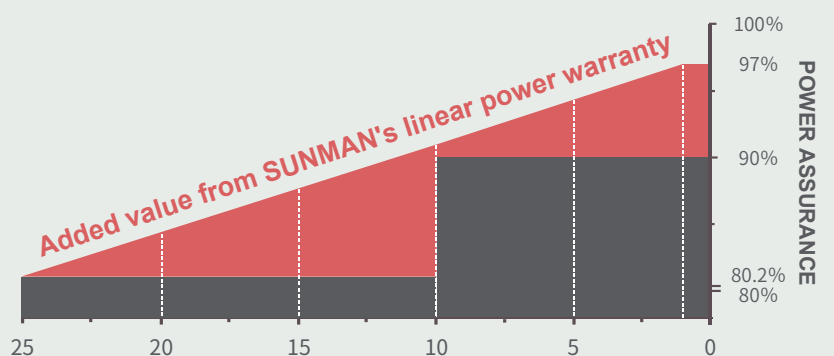
www.sunman-energy.com



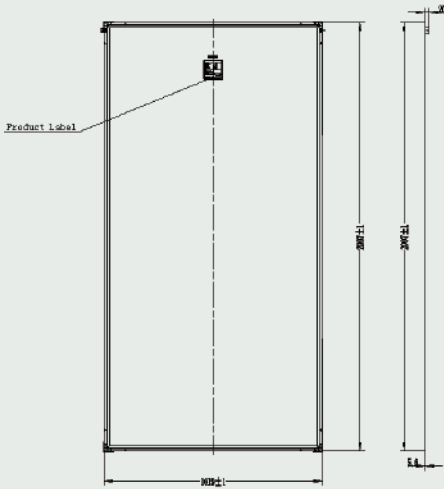
ULTRA-LIGHT & FLEXIBLE SOLAR PANEL

CAUTION: Read installation manual before using the product.

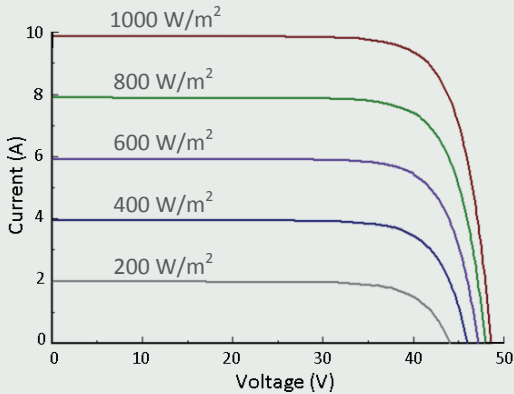
©2020 Sunman (zhenjiang) Co., Ltd. All rights reserved. Specifications included in this datasheet are subject to change without notice.



DIMENSIONS



I-V CURVE (355)



TEMPERATURE CHARACTERISTICS

Nominal Module Operating Temperature(NOMT) **41±2 °C**

Temperature Coefficient of P_{max} **-0.38 %/°C**

Temperature Coefficient of V_{oc} **-0.28 %/°C**

Temperature Coefficient of I_{sc} **0.020 %/°C**

Fire resistance: **C** in accordance with UL 790

Dealer's Stamp:

ELECTRICAL CHARACTERISTICS

STC	SMD355M-6X12UW	SMD350M-6X12UW
Maximum Power (P_{max})	355	350
Maximum Power Voltage (V_{mp})	39.5	39.2
Maximum Power Current (I_{mp})	8.99	8.93
Open-circuit Voltage (V_{oc})	48.1	47.9
Short-circuit Current (I_{sc})	9.51	9.46
Module Efficiency (%)	17.4	17.1
Operating Temperature	-40 °C to 85 °C	
Maximum System Voltage	1000 V DC (IEC)	
Maximum Series Fuse Rating	20 A	
Application Class	Class A	
Power Tolerance	0/+5 W	

STC: Irradiance 1000W/m², Cell temperature 25°C, AM=1.5. Tolerances of P_{max} , V_{oc} and I_{sc} are within ±5%

NMOT	SMD355M-6X12UW	SMD350M-6X12UW
Maximum Power (P_{max})	266	262
Maximum Power Voltage (V_{mp})	36.4	36.2
Maximum Power Current (I_{mp})	7.31	7.24
Open-circuit Voltage (V_{oc})	44.7	44.5
Short-circuit Current (I_{sc})	7.76	7.69

NMOT: Irradiance 800W/m², Ambient temperature 20°C, AM=1.5, Wind speed 1 m/s.

MECHANICAL CHARACTERISTICS

Solar Cell	Monocrystalline silicon (6 inches)
No. of Cells	72 (6×12)
Module Dimensions	2077×1019×5.6 mm
Weight	6.6 kg
Backsheet	White
Frame	Black Anodized Aluminium Alloy
J-box	IP 68 rated
Output Cables	Photovoltaic technology cable 4.0 mm 2, (+)150 / (-)450 mm
Connector	Dawning: C1

PACKAGING CONFIGURATION

	20' GP	40' HC
Module per pallet	80	50
Pieces per container	400	1100